

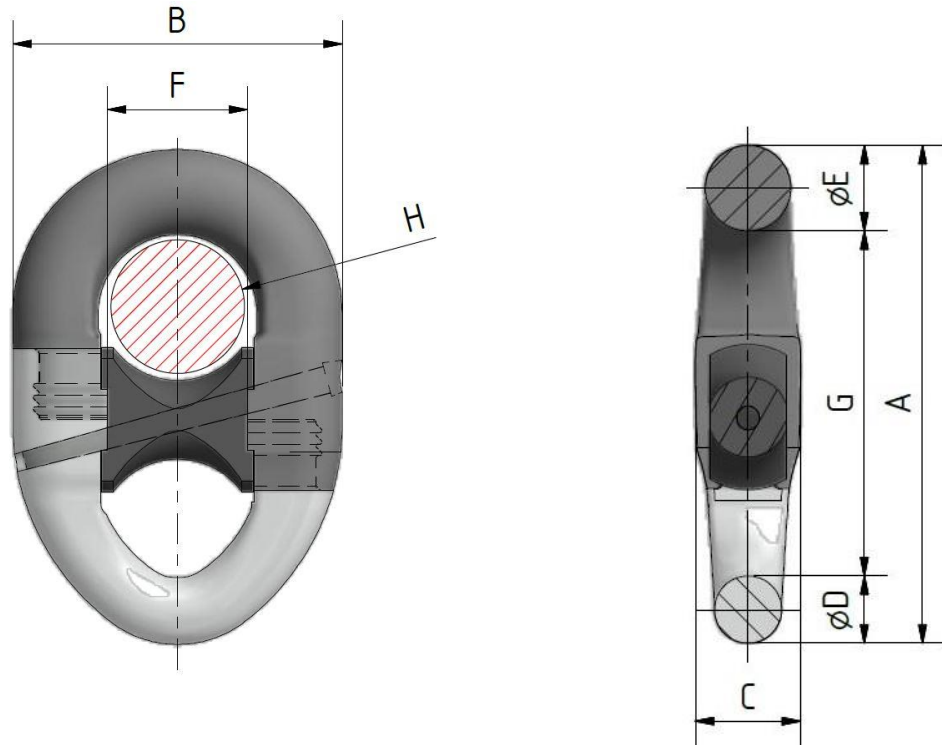
# Kenter Type Connection



## Trident Anchor Shackle

DNV-GL Type Approved

Offshore accessory to be used for Temporary and Mobile Mooring as defined in DNVGL-OS-E301, Position Mooring, July 2015



chain dia.	A	B	C	D	E	F	G	H	R4 PL kN	R4 MBL kN
76	619	412	130	83	106	175	430	160	4731	6001
84	685	455	141	90	118	193	477	180	5682	7208
89	725	482	152	98	125	205	502	190	6310	8004
95	745	510	163	98	130	217	517	200	7096	9001
120	978	650	205	132	168	276	678	260	10700	13573



Type approved by: **DNV-GL**  
 Application: **Temporary and Mobile Mooring**  
 Manufactured & Tested: **in Germany by Feuero**  
 Material: **Forged Steel - Grade R4**